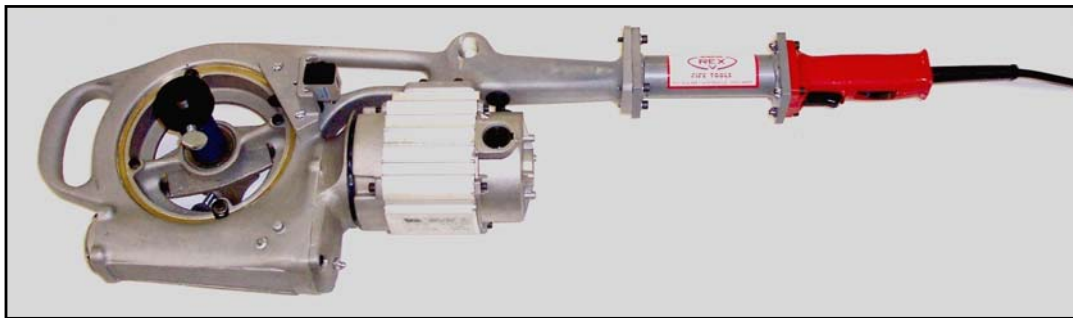


Wheeler-Rex Model 68115 Portable Power Drive Operating Instructions and Repair Parts List



**Wheeler Mfg. Div Rex Intl USA Inc.
3744 Jefferson Road
Ashtabula, OH 44004
Tel: 800-321-7950
Fax: 440-992-2925
wheeler@wheelerrex.com
www.wheelerrex.com**

Other adapters available to use with the 68115 power drive.

10696 Adapter for 12R Drop Head Dies



10709 1" Square Female Adapter



Telescoping Valve Key Kits



Telescoping Valve Keys

Quick disconnect pull pins make adjustments fast and easy. Both a manual handle and a 1" square power adapter are included. 2" square female drive fits most standard valves.

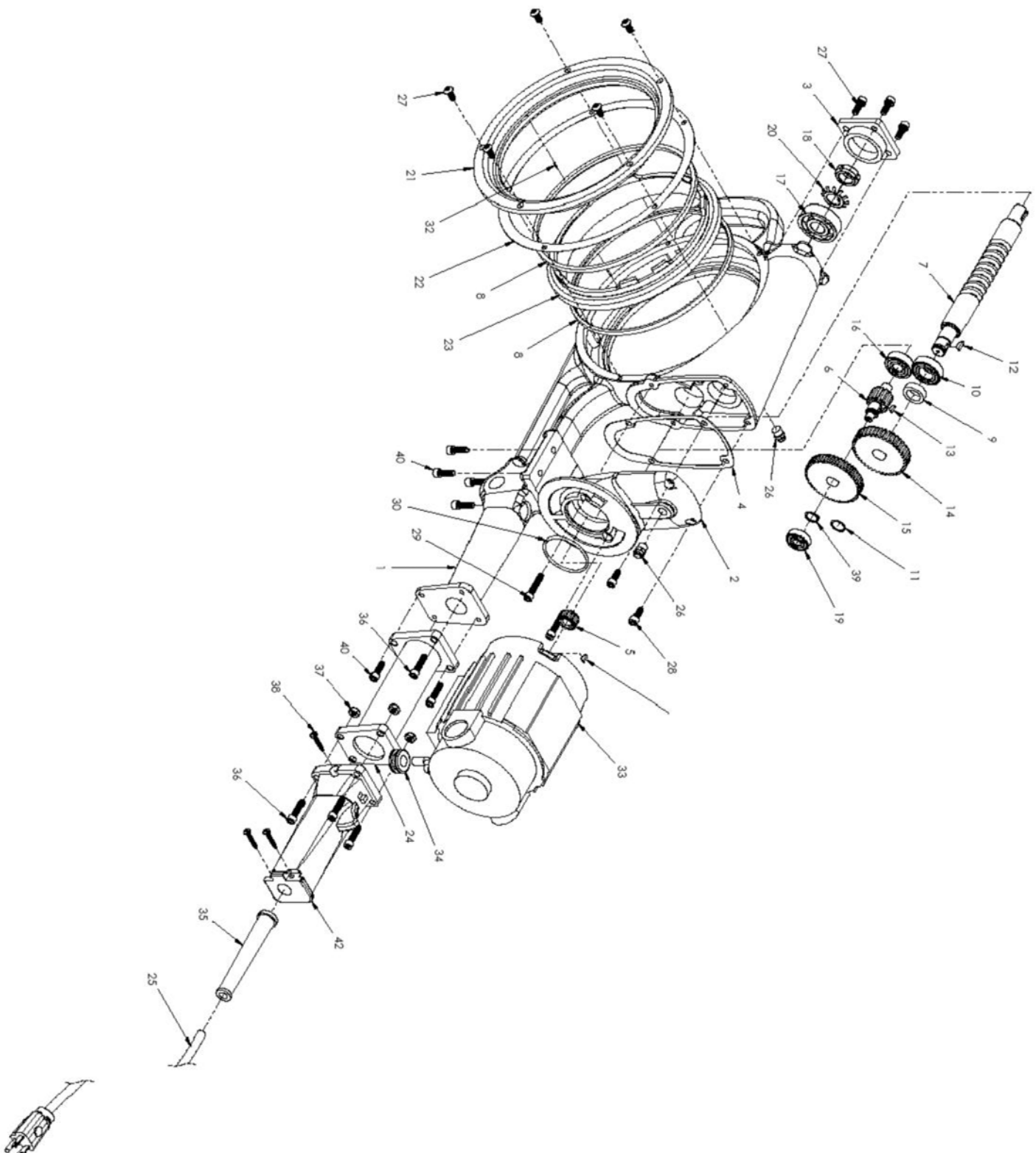
Available as:

8806 6 Foot Telescoping Valve Key

8808 8 Foot Telescoping Valve Key

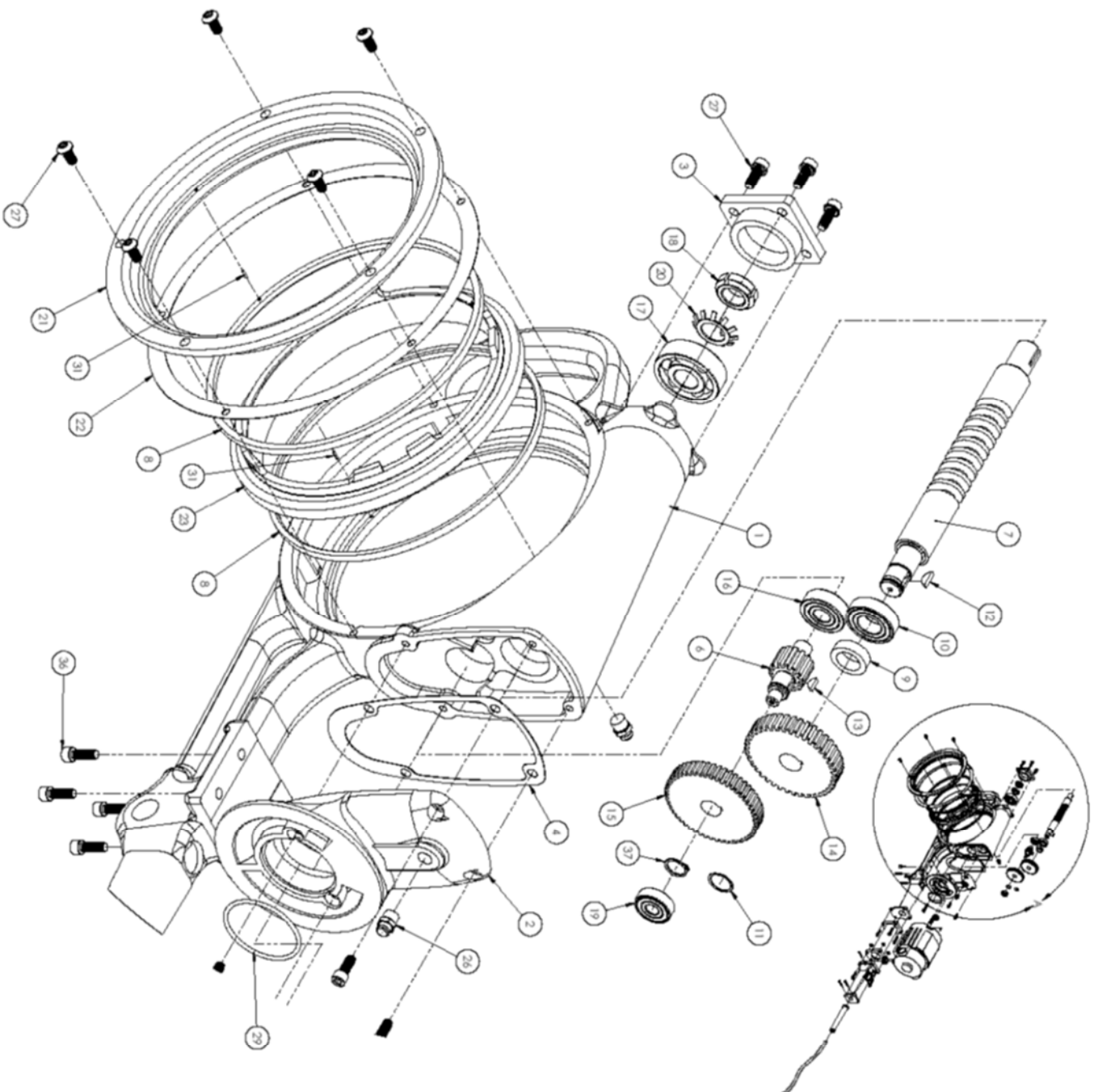
88024 2 Foot Extension

Extends your 8806 to 8808



3744 Jefferson Rd., Amherst, OH 44005
 DESCRIPTION:
 POWER DRIVE 115V
 PART NO. 68115

ITEM NO.	PART NUMBER	DESCRIPTION	QTY
1	19711	FRAME - POWER DRIVE (MACHINING)	1
2	10361	GEAR COVER (MACHINING)	1
3	10360	BEARING CAP	1
4	10424	GASKET	1
5	10354	MOTOR PINION	1
6	10356	PINION SHAFT	1
7	10358	WORM	1
8	10364	WEAR RING	2
9	10365	SPACER	1
10	10391	BEARING	1
11	11106	RETAINING RING	1
12	10385	WOODRUFF KEY NO. 3, USA STD 404	1
13	10384	WOODRUFF KEY NO. 213	2
14	10357	SPUR GEAR	1
15	10355	INTERMEDIATE GEAR	1
16	10389	BEARING	1
17	10388	BEARING	1
18	11435	LOCK NUT	1
19	10390	BEARING	1
20	5854	BEARING LOCK WASHER, W03	1
21	10362	WORM GEAR COVER	1
22	10420	GASKET	1
23	10359	WORM GEAR (MACHINING)	1
24	700953	POWER DRIVE HANDLE EXTENSION	1
25	221389	CORD SET	1
26	275488	GREASE FITTING	2
27	276651	1/4-20 x 1/2" STAINLESS STEEL BHCS	9
28	275021	1/4-20 x 5/8" SOCKET HEAD CAP SCREW	6
29	275715	1/4-20 x 1 1/4" SHCS	2
30	10419	-136 O-RING (BUNA)	1
31	908095	1/4-20 x 1/4" CUP POINT SET SCREW	2
32	10386	3/16 DIA x 1 1/2" ROLL PIN	2
33	15690	MOTOR 1/2 HP, 115 V	1
34	10767	GROMMET-RUBBER	1
35	276820	CORD PROTECTOR 44-76-0140	1
36	1903	1/4-20 x 1" SHCS	6
37	729	1/4-20 THIN ESNA NUT	4
38	276804	8-16 x 1 SLOTTED TORX HEAD 06-82-7326	3
39	11107	STEEL RETAINING RING	1
40	4181	1/4-20 x 3/4" SHCS	6
41	276818	TERMINALS, MV14BCX (NOT SHOWN)	5
42	277147	HANDLE & SWITCH KIT	1



Item No	Part No	Description	Qty
1	19711	FRAME - POWER DRIVE (MACHINING)	1
2	10361	GEAR COVER (MACHINING)	1
3	10360	BEARING CAP	1
4	10424	GASKET	1
5	10354	MOTOR PINION	1
6	10356	PINION SHAFT	1
7	10358	WORM	1
8	10364	WEAR RING	2
9	10365	SPACER	1
10	10391	BEARING	1
11	11106	RETAINING RING	1
12	10385	WOODRUFF KEY NO. 3, USA STD 404	1
13	10384	WOODRUFF KEY NO. 213	2
14	10357	SPUR GEAR	1
15	10355	INTERMEDIATE GEAR	1
16	10389	BEARING	1
17	10388	BEARING	1
18	11435	LOCK NUT	1
19	10390	BEARING	1
20	5854	BEARING LOCK WASHER, W03	1
21	10362	WORM GEAR COVER	1
22	10420	GASKET	1
23	10359	WORM GEAR (MACHINING)	1
24	700953	POWER DRIVE HANDLE EXTENSION	1
25	275462	SWITCH 23-66-1020	1
26	221389	CORD SET	1
27	275488	GREASE FITTING	2
28	276651	1/4-20 x 1/2" STAINLESS STEEL BHCS	9
29	275021	1/4-20 x 5/8" Socket Head Cap Screw	2
30	275715	1/4-20 x 1 1/4" SHCS	2
31	10419	-136 O-RING (BUNA)	1
32	908095	1/4-20 x 1/4" Cup Point Set Screw	2
33	10386	3/16 DIA x 1 1/2" ROLL PIN	2
34	15690	MOTOR 1/2 HP, 115 V	1
35	10767	GROMMET-RUBBER	1
36	276820	CORD PROTECTOR 44-76-0140	1
37	1903	1/4-20 x 1" SHCS	6
38	729	1/4-20 Thin Hex Nylon-Insert Locknuts	4
39	275460	RH HANDLE 31-44-1441	1
40	275461	LH HANDLE 31-44-1446	1
41	276821	CORD CLAMP 31-17-0156	1
42	276827	CLAMP SCREW 06-82-7270	2
43	276804	8-16 x 1 Slotted Torx Head 06-82-7326	3
44	11107	Steel Retaining Ring	1
45	4181	1/4-20 x 3/4" SHCS	6
46	275470	SWITCH TERMINAL, 22-44-0090 (NOT SHOWN)	6
47	276818	TERMINALS, MV14BCX (NOT SHOWN)	5

68115 / 681150 Power Drive - Counter

Adding electronic counter assembly

1. Remove set screws



2. Replace with digital counter assembly and the two socket head cap screws.

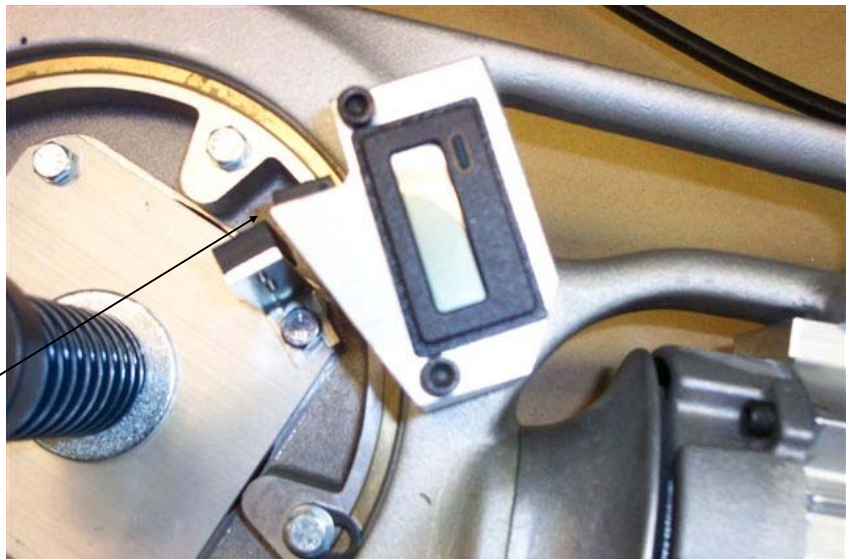
Screws

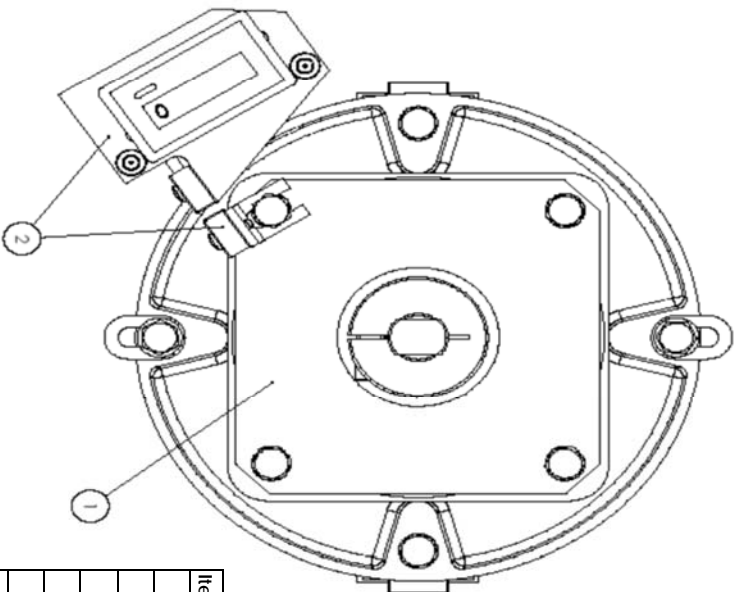
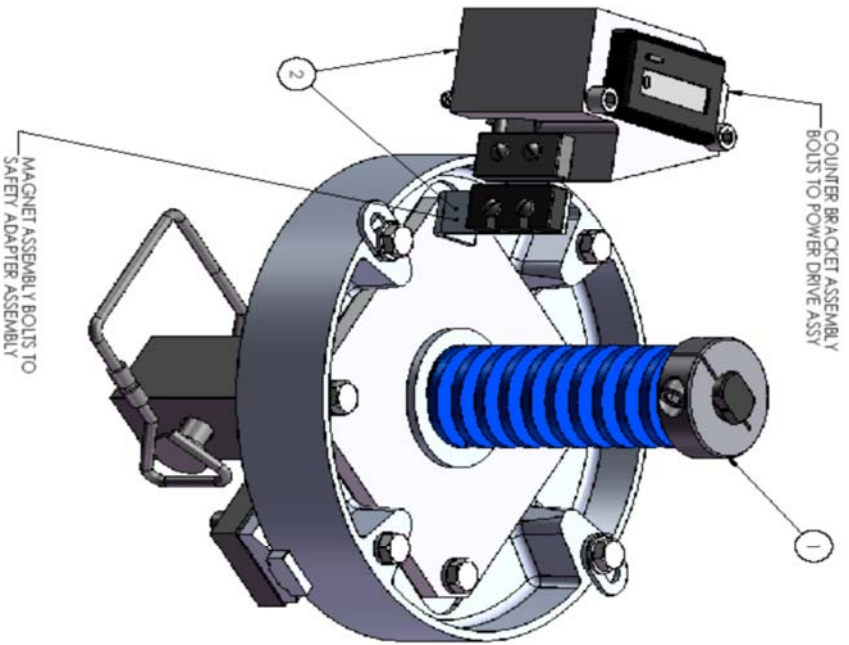
**Mechanical
Counter
Assembly**



3. Magnet bracket should be positioned with approximately 3/16" gap between its self and the sensor that is fastened to the digital counter bracket. Make sure to watch the magnet bracket on the first turn that it does not "crash" into the digital counter bracket.

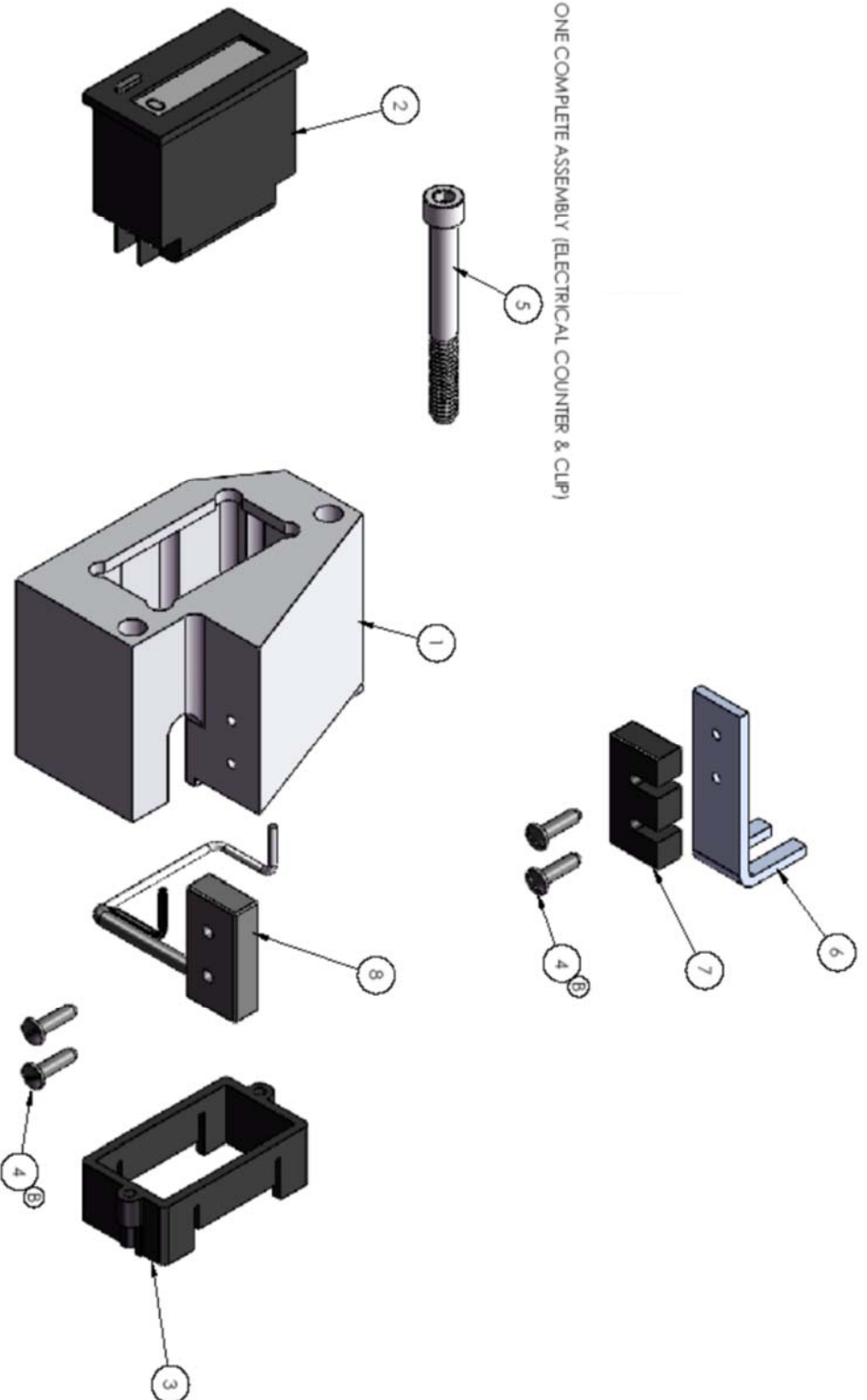
3/16" Gap





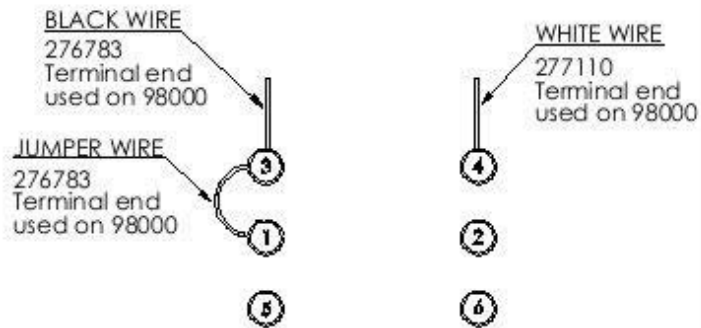
Item No	Part No	Description	Qty
1	12952	ADJUSTING NUT	1
2	15575	SPRING	1
3	700984	ADAPTER MACHINED	1
4	700997	ADAPTER PLATE	1
5	13965	SQUARE DRIVE	1
6	12948	PAWL	2
7	12949	RATCHET DOG	2
8	276129	3/4 WASHER	1
9	275070	#10-24 x 5/8" SHCS	4
10	560081	1/4-20 x 3/4" HHCS	5
11	1903	1/4-20 x 1" SHCS	1
12	276819	1/4-20 x 1 3/8" HHCS	2
13	11274	FINGER LOCK WASHER	2
14	275104	#10 SPLIT LOCK WASHER	4
15	276190	3/8-16 x 3/4" THUMB SCREW	1
16	275105	1/4" SPLIT LOCK WASHER	6
17	729	1/4-20 Thin Hex Nylon-Insert Locknuts	1
18	10713	3/16" FLAT WASHER	2
19	5306	SPRING WASHER	2

NOTE: ITEM NUMBERS 2 & 4 ARE ONE COMPLETE ASSEMBLY (ELECTRICAL COUNTER & CLIP)

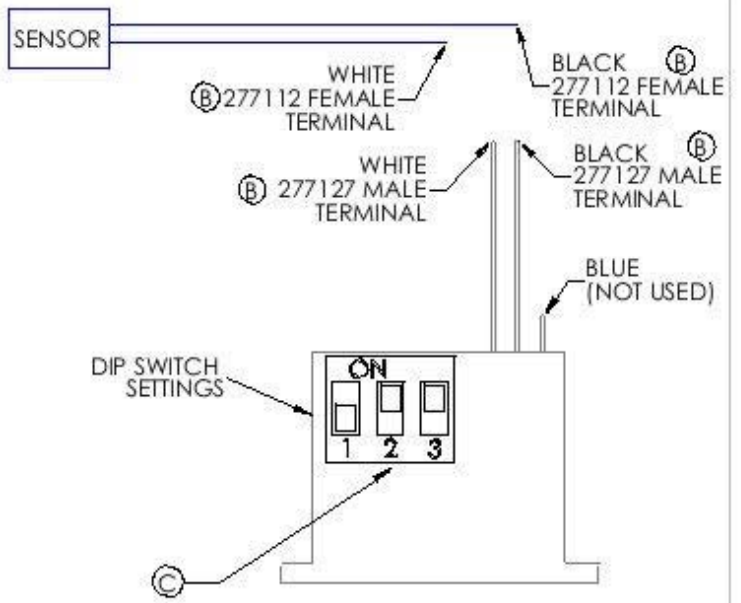


NOTE:
CONNECT 277127 MALE TERMINAL TO BOTH BLACK & WHITE WIRE
ON DIGITAL COUNTER
CONNECT 277112 FEMALE TERMINAL TO BOTH BLACK & WHITE WIRE
ON SENSOR
SEE PRINT # 276303 FOR WIRE DIAGRAM SPECS


3744 Jefferson Rd., Ashboulder, OH 44005
DESCRIPTION:
ELECTRONIC COUNTER ASSY.
PART NO. 701061



(A) WIRE DIAGRAM FOR CUB70000 DIGITAL COUNTER



WIRE DIAGRAM FOR CUB7CCS0 DIGITAL COUNTER



REV
C

3744 Jefferson Rd., Ashtabula, OH 44005

SHEET 1 OF 1

DESCRIPTION:
DIGITAL COUNTER WIRE DIAGRAM
PART NO. 276303 WIRE DIAGRAM

USED ON: 98000,681150

A SIZE

68115 / 681150 Portable Power Drive

Beefed-Up Worm, Heavy-Duty On-Off and Reversing Switches and add extra reliability!!



Lightweight and powerful!! Threads pipe and conduit 1/8” through 8”, drives geared cutters and groovers through 8”, operates valves, powers many applications. threads bolts, drives tie-down anchors too.

- ◆ Favorite Power drive of all craftsmen
- ◆ Built for years of trouble-free service
- ◆ Long handle reduces user fatigue
- ◆ Torque arm absorbs threading torque
- ◆ Operates on standard lighting circuits
- ◆ Adapters for all popular threaders

Specifications:

Electric motor:	1/2hp universal, 115V, 25-60hz, AC/DC reversible
Gearing:	Oversize worm gearset for maximum life. All gears grease lubricated, ball bearing mounted.
Switches & duty	Separate on-off and reverse switches for greater reliability. Heavy
Power Cord	oil resistance 3-wire #14 power cord, 9' with 3 prong grounding plug.
Frame:	Solid one-piece aluminum for strength and durability
Output Speed:	Threading 2” pipe - 16rpm
Weight:	38lbs - Model 68115 45 lbs - Model 681150

Threading Pipe

Grasp the handle in the right hand and the end handgrip in the left hand. The face of the die stock should be toward the operator.

Place the drive on the pipe as you would in handling a hand operated die stock. Lift the handle to a vertical or nearly vertical position as in the photo opposite.

With the palm of the left hand against the face of the die stock, CENTER the die segments against the end of the pipe.

Continue to move the handle down to a position where the elbow is straight and stiff and the shoulder held low so that the weight of the operator can be placed squarely above the handle. The stance of the operator should be at a right angle to the machine.

NOTE: When using quick-opening die stocks, apply hand pressure to the face of the stock and switch on power simultaneously to set dies.

With the heel of the left hand firmly against the stock, bring the right hand down sharply (see photo opposite) causing the segments to bite into the pipe.

Now tighten set screws (work holders) before beginning the threading operation.

Operating the 68115 on the Pipe

Beginning the Thread

Place the control switch in the forward or threading position. Hold oil can in left hand. Right hand should be firm on the handle and the power switch of the tool. Press power switch ON and cut threads applying oil as needed. Because the 68115 cuts and threads faster continuously, less oil is required.

Finishing the Thread

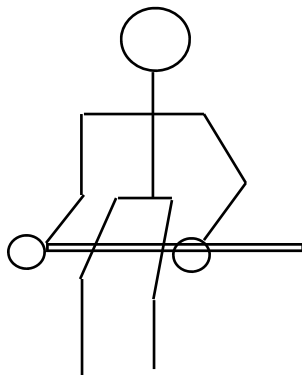
Approaching the end of the thread, be careful that the thread is not run onto the pipe far enough to lock the head of the die stock. If the die stock is allowed to lock, release the power switch immediately. Locking may not only damage die stock, but may strip gears of the drive.

When thread is completed, shut off power. Then place the control switch in neutral and then move to Reverse Position. Turn on power and back the dies off to a normal starting position.

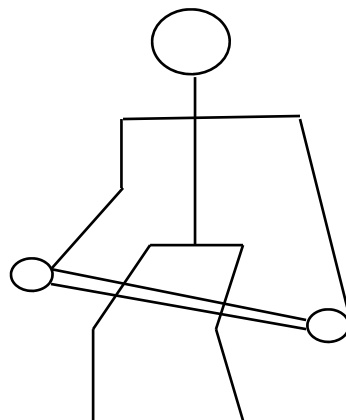
Before taking tool off of the pipe, rest control switch to Neutral or Forward position.

Some Operating Hints

Keep Elbow straight - Weight on Handle



Wrong



Right

Do not allow elbow to bend. Before turning on power, shove the handle down so that the elbow is straight and the weight of the operator squarely above the handle. This rule is especially true when threading larger pipe.

Some Operating Hints

The 68115 features a new type safety control switch. It combines the reversing switch with a trigger type engaging switch in a manner that the operator cannot reverse the direction of rotation without first releasing the trigger switch.

The operation of this switch is very simple, to change the direction of rotation of the machine, simply release the trigger switch and then slide the reverse switch to either the forward or reverse position. The machine is then ready for normal operation by depressing the trigger switch.

Care in Servicing

The 68115 power drive is and “on the job” tool. It is designed for everyday use and for trouble-free operation. The frame is made of high strength cast aluminum alloy.

Lubrication

The bearings in the motor are of the sealed type and are lubricated. No additional lubricant is required.

Gears

The gear housings on the 68115 power drive are extra large and should normally contain enough grease for the life of the tool. However, should the tool be subjected to severe usage, provision has been made through two grease fittings to supply additional lubricant. One of these is on the gear case cover, just ahead of the motor, which supplies the reduction gears and the other is at the side of the frame for lubricating the worm gear.

The grease originally supplied in the tool is a special hi-temperature grease No. 1 consistency, readily obtainable from any of the major oil companies.

Care of the Motor

The motor brushes should be inspected at least once a year, according to the usage of the machine. Always be sure to see that the brushes are returned to their original side and the position from which they were taken. This can be done by marking the brush with a red pencil before it is removed, to indicate the side from which it is taken.

Be sure to keep the motor clear of dust and dirt by cleaning it with an air hose from time to time.

Caution

Your 68115 is designed to give satisfactory service with ordinary treatment. Do not drop as this may cause damage.

Safety Adapter for use with 68115 Power Drive

The Safety Adapter for the 68115 Portable Power Drive is essentially a torque limiting device. The 68115 machine has a rated capacity of 250 foot pounds of torque. Under overload conditions, for a short interval, it may produce two (2) or more times this amount. This amount of torque may be damaging to many devices upon which the 68115 power drive may be used.

Using the safety adapter, the operator can predetermine a safe torque limit and set the adapter to release at this point. The machine will drive through this adapter up to this limit and then the safety adapter will slip, thus preventing a torque overload.

The safety adapter is simply mounted. When the machine is positioned with the motor on the bottom, the adapter is slipped into the worm gear, engaging the driving lugs on the adapter in the slots in the ring gear, so that the spring extends to the operators left and the square drive socket extends to the operators right. The adapter is locked in position by moving the washers with the elongated slots over the edge of the ring gear and tightening down the screws. Loosen handle locking screw and turn handle 180 degrees to correct operating position. Tighten screw.

The safety adapter is adjustable in that it can be set to release at any torque from 0 to 250 foot pounds. The collar, which retains the coil spring, is threaded on its diameter. By turning this collar and compressing the spring, the desired torque limit is set. The approximate torque settings can be found inscribed on the shaft, to which the collar is threaded. By lining up the outside face of the collar (the face opposite the one on which the spring bears), with a given scribe mark, the desired torque can be selected. By turning the collar one (1) complete revolution, the release torque can be changed by about 12.5 foot pounds. With a little practice, the adapter can be preset to any given torque within the adapters range.

The safety adapter can be used with any of the Wheeler-Rex geared pipe threaders up to four inch pipe maximum. However, the adapter would be more appropriate in applications where the load might be instantly increased from a nominal load to some extreme load for exceeding the maximum strength of the driven member. It is obvious that the safety adapter would be an excellent safeguard when turning gate valves, opening large overhead doors, hoists, gear trains and other applications which, because of physical limitations, might incur jamming.

The square drive socket on this attachment will handle and 15/16" or 1" male square drive.



Wheeler Mfg. Div Rex Intl USA Inc.
3744 Jefferson Road
Ashtabula, OH 44004
Tel: 800-321-7950 * Fax: 440-992-2925
wheeler@wheelerrex.com
www.wheelerrex.com